

DUO-FAST[®]

DF225C 0° COIL SIDING NAILER SYSTEM

**SIDING
FENCING
DECKING**



**LIGHTWEIGHT,
ONLY 4.5 lbs.**

**CONVENIENT
BELT HOOK**

**EASY LOAD
MAGAZINE**

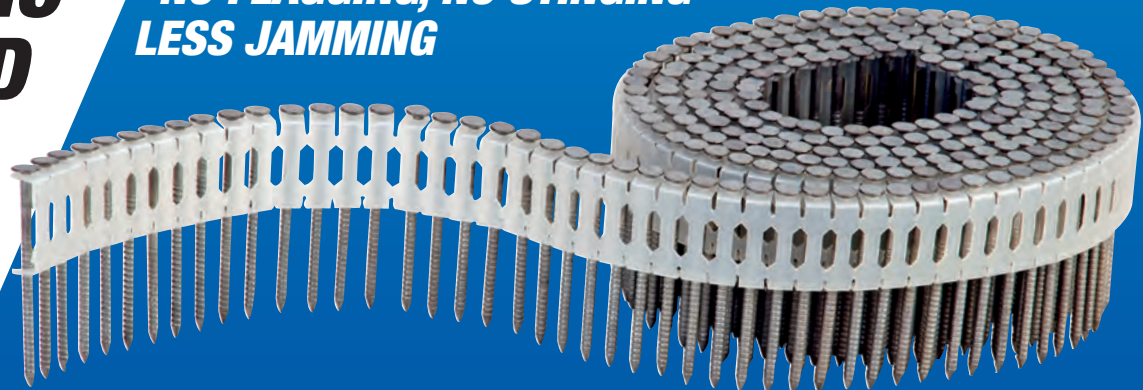
**TOOL-FREE
ADJUSTABLE
DEPTH OF DRIVE**

**CONTRACTOR DESIGNED, DELIVERS MORE
POWER AND CONSISTENTLY DRIVES FLUSH.**

**0° PLASTIC
COLLATED
NAILS**

**NO FLAGGING, NO STINGING
LESS JAMMING**

**33% MORE-
300 NAILS
PER COIL**



**Available in Stainless Steel, Hot Dipped Galvanized,
Electro-Galvanized, Aluminum.**



DF225C

DRIVES 1-1/2" TO 2-1/2" LENGTHS

ADJUSTABLE EXHAUST

360° ADJUSTABLE EXHAUST CAN BE DIRECTED AWAY FROM THE USER

SWITCHABLE TRIGGER
FOR EASY TRANSITION FROM BUMP TO SEQUENTIAL DRIVING

TOOL-FREE DEPTH OF DRIVE
DRIVES NAILS FLUSH EVERYTIME... SAVE TIME AND MONEY BY NOT HAVING TO GO BACK AND CAULK

EASY LOAD MAGAZINE
NO POST/OPENS FROM SIDE HELPS PREVENT JAMS

NO MAR TIP
WON'T DAMAGE WORK SURFACE



FASTENER SPECIFICATIONS	
0° PLASTIC COIL:	COIL
NAIL LENGTHS:	1-1/2"-2-1/2"
SHANK DIAMETER:	0.80"-.105"
SHANK STYLE:	SMOOTH, RING, SCREW SHANK
NAILS PER COIL:	300

TOOL SPECIFICATIONS	
MODEL NUMBER:	DF225C
PART NUMBER:	502950
WEIGHT:	4.5 LBS.
HEIGHT:	12-5/8"
LENGTH:	12-1/2"
WIDTH:	5-3/4"
MAG TYPE:	COIL
OPERATING PRESSURE P.S.I. BAR:	80-120

REVERSIBLE BELT HOOK
CLIPS NAILER SECURELY TO YOUR TOOL BELT

COMFORT MOLDED GRIP
NON-SLIP CUSTOM MOLDED HANDLE

HIGH LOAD CAPACITY
33% MORE NAILS- 300 NAILS PER COIL

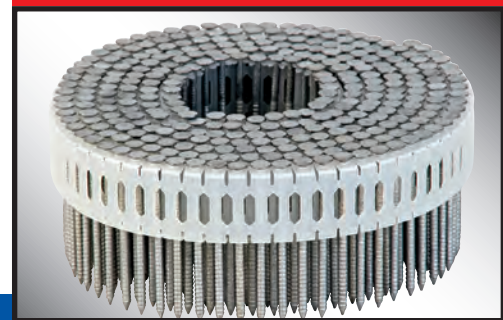


SIDING



FENCING

NO FLAGGING, STING OR DEBRIS



0° PLASTIC COLLATED

LIGHTWEIGHT, POWERFUL AND RELIABLE-

Delivers More Power and Consistent Driving in a Lightweight design increasing job productivity and safety. Flexible 0° plastic collation eliminates wire flagging and stinging debris using every nail and in every coil eliminating waste. Includes: Safety glasses, belt hook, owner's manual, oil.

www.duofast.com

DFC1040

DUO-FAST®